

PORT EVERGLADES HARBOR BROWARD COUNTY, FLORIDA HYDROGRAPHIC EXAM SURVEY FY20 31, 36, 37, 42 AND 45-FOOT PROJECT

SURVEY NOTES

- REFER TO SURVEY NO. 19-105.
 - ELEVATIONS ARE IN FEET AND TENTHS AND REFER TO THE NOAA REPORTED MEAN LOWER LOW WATER (MLLW) TIDAL DATUM, 1983-2001 EPOCH.
 - TIDAL REDUCTIONS WERE OBTAINED UTILIZING A REAL-TIME KINEMATIC (RTK) GPS AND REFERENCED TO MLLW UTILIZING A HYPACK KINEMATIC TIDE DATUM (KTD) MODEL NAMED: "BROWARD-MIAMIDADE-MONROE-COLLIER_2018_05_02.KTD".
 - ALL ELEVATIONS ARE BELOW THE CHART DATUM UNLESS PRECEDED BY A (+) SIGN.
 - PLANE COORDINATES ARE BASED ON THE TRANSVERSE MERCATOR PROJECTION FOR THE EAST ZONE OF FLORIDA AND REFERENCED TO NORTH AMERICAN DATUM OF 1983 (NAD83).
 - ALL STATIONING REFERS TO THE CENTERLINE OF THE CHANNEL.
 - THIS SURVEY WAS PERFORMED USING REAL-TIME KINEMATIC (RTK) GPS POSITIONING WITH THE FOLLOWING REFERENCE BASE LOCATION:
REFERENCE BASE LOCATED AT "USN NORTH RANGE 2 NO. 5" (OPUS PID: CS4034)
TIDE STAFF SET FROM MONUMENT "872 2957 TIDAL 2" (PID: AD5884)
 - DEPTHS DEPICTED BY THIS SURVEY ARE REFERENCED TO MLLW, TIDAL 1983-2001, AS REPORTED BY THE NATIONAL OCEANIC AND ATMOSPHERIC ADMINISTRATION (NOAA). A MODIFIED VERSION OF NOAA'S VDATUM MODEL WAS USED TO CALIBRATE TO THE PUBLISHED MLLW HEIGHTS OF THE BENCH MARKS BELOW:
NOAA TIDAL STATION 872-2957, NORTH DANIA SOUND, FL FOR ENTIRE PROJECT
 - VERTICAL MEASUREMENTS WERE MADE USING AN EDGETECH 6205 COMBINED MULTI-BEAM AND SIDESCAN SONAR. SOUNDINGS SHOWN ARE IN HIGH FREQUENCY. TOPOGRAPHIC MEASUREMENTS WERE MADE USING A TRIMBLE R8 RTK GPS.
- | VESSEL | DATE OF SURVEY | CUT |
|------------|----------------|--|
| SB-48 TOPO | 03-04 MAR 2020 | SP1, SP2, SP3 |
| SB-48 TOPO | 06-08 MAR 2020 | NORTH OF ENTRANCE CH. AREA NEAR USCG STATION |
| SB-48 TOPO | 18-19 APR 2020 | ENTRANCE CHANNEL, TURNING BASINS |
| SB-48 TOPO | 20-21 APR 2020 | AREA NEAR USCG STATION, AREA NORTH OF ENTRANCE CHANNEL |
- AIDS TO NAVIGATION WERE LOCATED DURING THIS SURVEY. NAVAIDS COLLECTED DURING SURVEY 19-105 (MAR 2019) ARE ALSO DEPICTED.
 - THE INFORMATION DEPICTED ON THIS MAP REPRESENTS THE RESULTS OF SURVEYS MADE ON THE DATES INDICATED ABOVE AND CAN ONLY BE CONSIDERED AS INDICATING THE GENERAL CONDITIONS AT THAT TIME. THIS CHART IS SOLELY FOR THE DISTRIBUTION OF AVAILABLE DEPTHS AT THE TIME OF THE SURVEY.
 - SURVEY ACCURACY PERFORMANCE STANDARDS, QUALITY CONTROL, AND QUALITY ASSURANCE REQUIREMENTS WERE FOLLOWED DURING THIS SURVEY IN ACCORDANCE WITH USAGE EM 1110-2-1003, HYDROGRAPHIC SURVEYING, 30 NOV 2013.

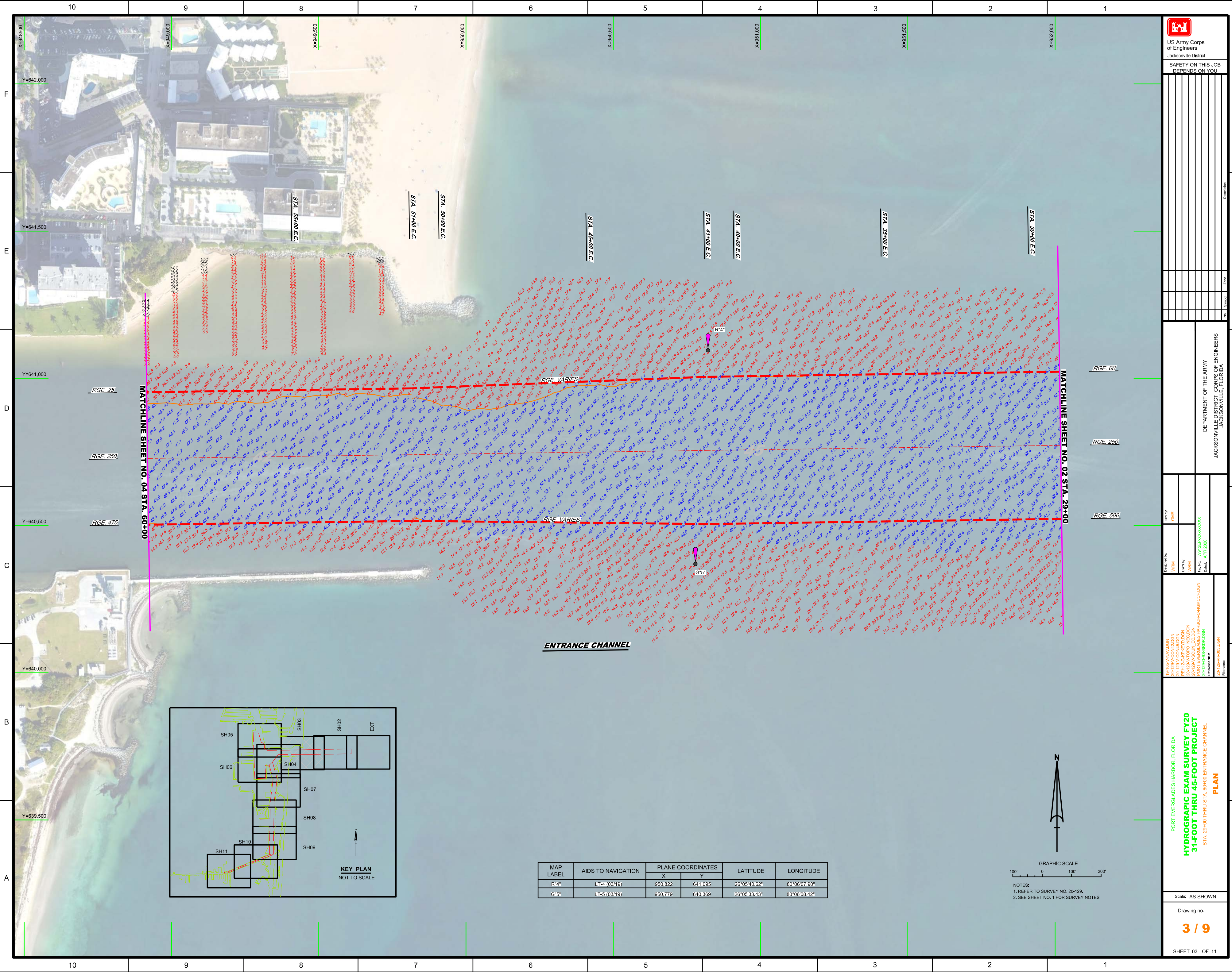
LEGEND	
	MONUMENT
	LIGHTED BEACON
	GREEN DAYBEACON
	RED DAYBEACON
	RED LIGHTED BUOY
	GREEN LIGHTED BUOY
	CAN BUOY
	NUN BUOY
	TIDE STAFF
8	PROJECT DEPTH

US Army Corps of Engineers
Jacksonville District
SAFETY ON THIS JOB DEPENDS ON YOU

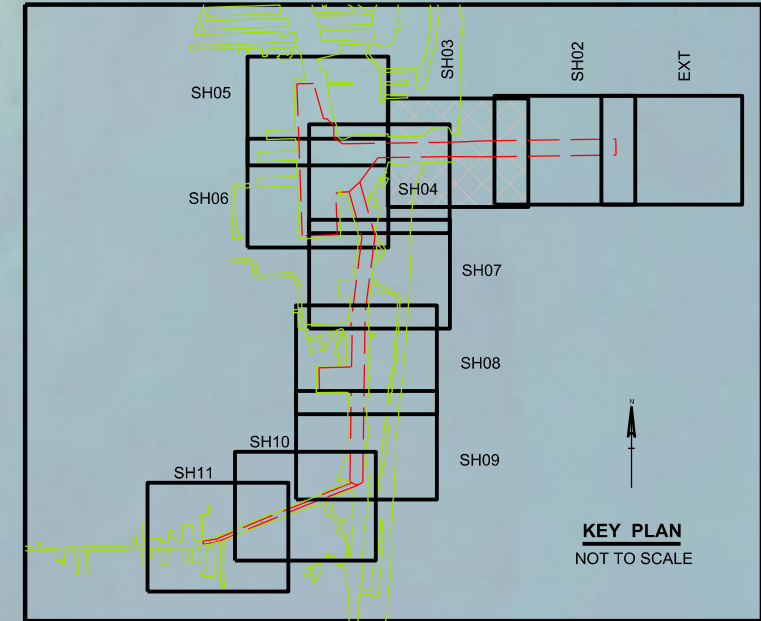
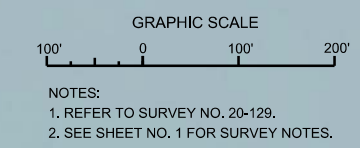
DEPARTMENT OF THE ARMY
JACKSONVILLE DISTRICT, CORPS OF ENGINEERS
JACKSONVILLE, FLORIDA

PORT EVERGLADES HARBOR, FLORIDA
HYDROGRAPHIC EXAM SURVEY FY20
31-FOOT THRU 45-FOOT PROJECT
INDEX, LOCATION AND VICINITY MAP

Scale: AS SHOWN
Drawing no. 1 / 9
SHEET 01 OF 11



MAP LABEL	AIDS TO NAVIGATION	PLANE COORDINATES		LATITUDE	LONGITUDE
		X	Y		
R*4	LT-4 (03/19)	950.822	641.095	26°05'40.62"	80°06'07.90"
G*5	LT-5 (03/19)	950.779	640.369	26°05'33.43"	80°06'08.42"



MATCHLINE SHEET NO. 04 STA. 60+00

MATCHLINE SHEET NO. 02 STA. 29+00

ENTRANCE CHANNEL

RGE VARIES

RGE VARIES

RGE 25

RGE 250

RGE 475

RGE 00

RGE 250

RGE 500

STA. 35+00 E.C.

STA. 37+00 E.C.

STA. 39+00 E.C.

STA. 45+00 E.C.

STA. 47+00 E.C.

STA. 49+00 E.C.

STA. 35+00 E.C.

STA. 30+00 E.C.

F
E
D
C
B
A

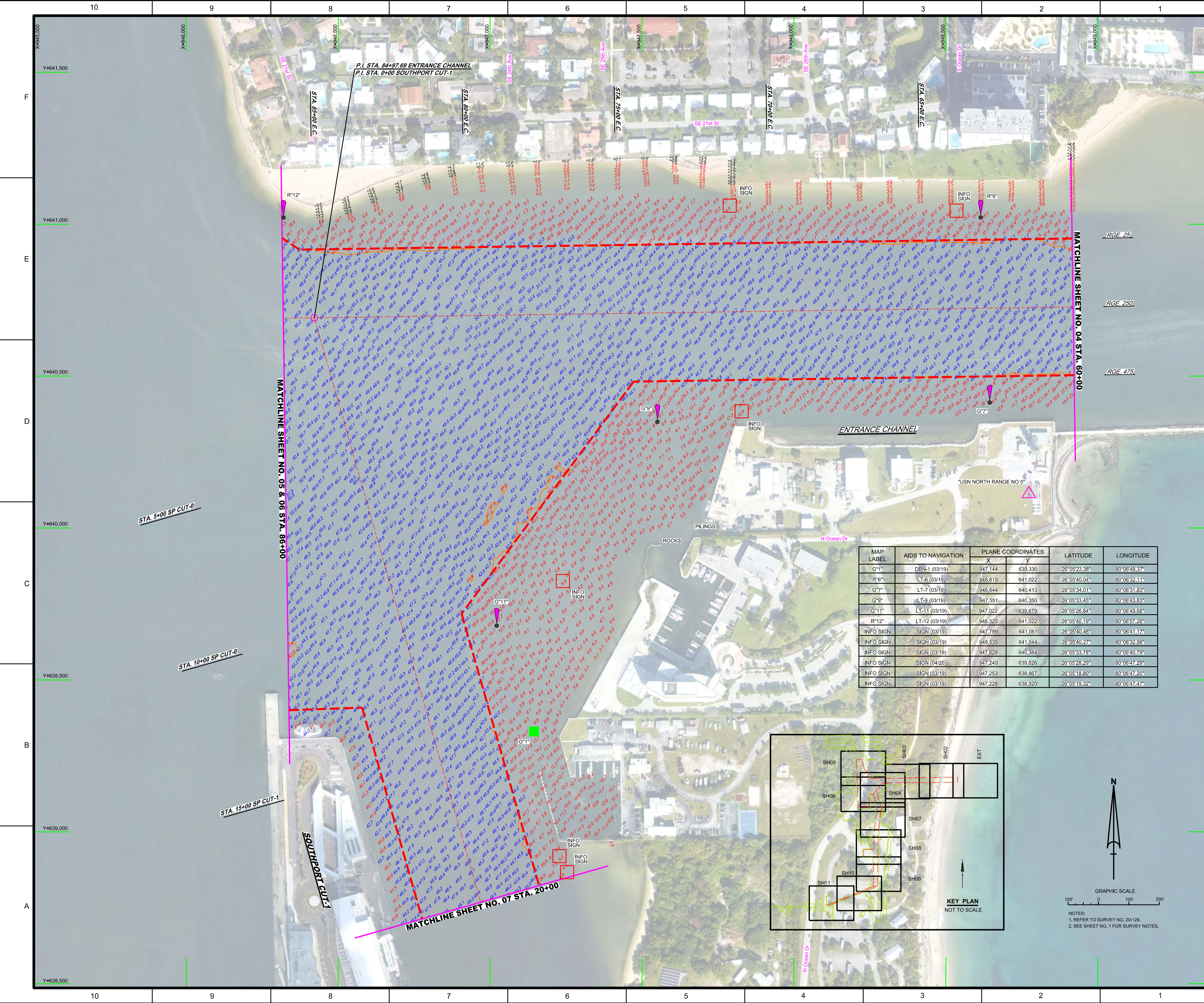
F
E
D
C
B
A

10 9 8 7 6 5 4 3 2 1

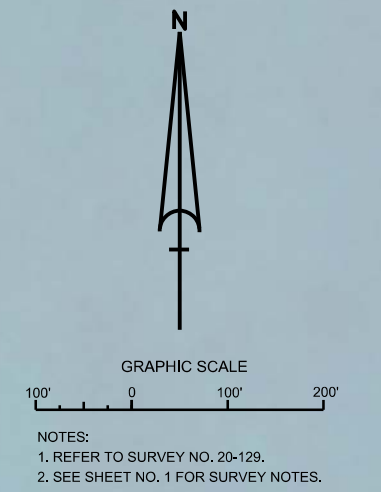
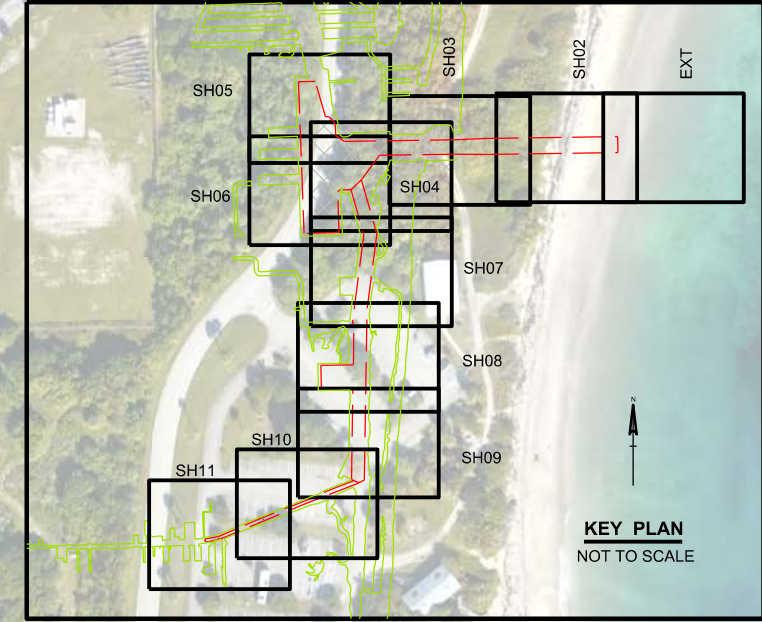
10 9 8 7 6 5 4 3 2 1

X=948500
Y=642,000
X=949,000
Y=641,500
Y=641,000
Y=640,500
Y=640,000
Y=639,500

X=952,000
X=951,500
X=951,000
X=950,500
X=950,000
X=949,500
X=949,000
X=948,500

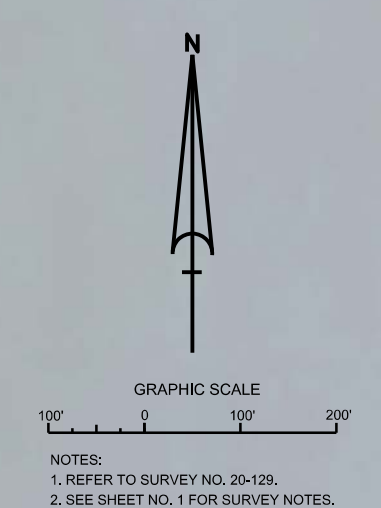


MAP LABEL	AIDS TO NAVIGATION	PLANE COORDINATES		LATITUDE	LONGITUDE
		X	Y		
G*11	DBN-1 (03/19)	947,144	639,330	26°05'23.38"	80°06'48.37"
R*6	LT-8 (03/19)	948,615	641,022	26°05'40.04"	80°06'32.11"
G*7	LT-7 (03/19)	948,644	640,413	26°05'34.01"	80°06'31.83"
G*9	LT-9 (03/19)	947,551	640,350	26°05'33.45"	80°06'43.83"
G*11	LT-11 (03/19)	947,022	639,679	26°05'26.84"	80°06'49.68"
R*12	LT-12 (03/19)	946,320	641,022	26°05'40.19"	80°06'57.28"
INFO SIGN	SIGN (03/19)	947,789	641,061	26°05'40.48"	80°06'41.17"
INFO SIGN	SIGN (03/19)	948,535	641,044	26°05'40.27"	80°06'32.98"
INFO SIGN	SIGN (03/19)	947,828	640,384	26°05'33.78"	80°06'40.79"
INFO SIGN	SIGN (04/20)	947,240	639,826	26°05'28.29"	80°06'47.29"
INFO SIGN	SIGN (03/19)	947,253	638,867	26°05'18.80"	80°06'47.20"
INFO SIGN	SIGN (03/19)	947,228	638,920	26°05'19.32"	80°06'47.47"



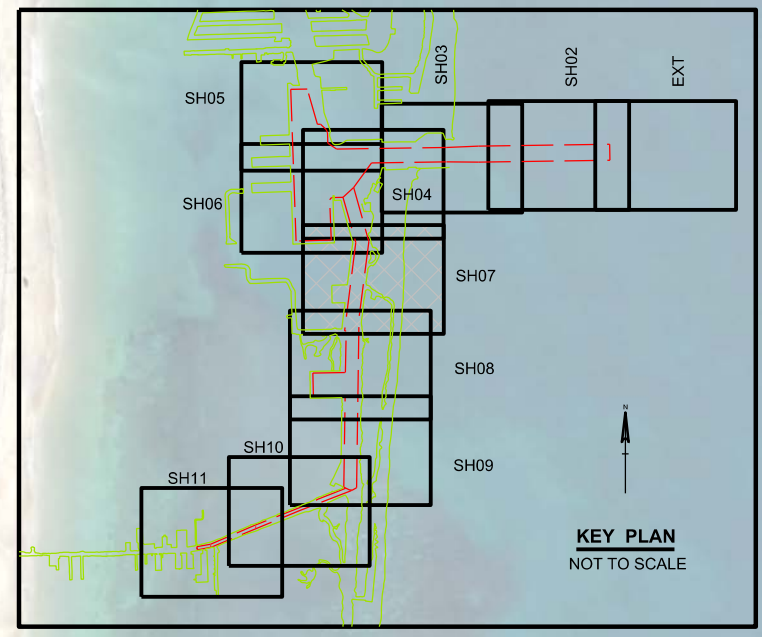


 US Army Corps of Engineers Jacksonville District SAFETY ON THIS JOB DEPENDS ON YOU	
Project Name: PORT EVERGLADES HARBOR, FLORIDA HYDROGRAPHIC EXAM SURVEY FY20 31-FOOT THRU 45-FOOT PROJECT STA. 86+00 THRU STA. 100+00 ENTRANCE CHANNEL / TURNING BASIN AND SOUTHERN TURNING BASIN PLAN	Drawing No.: 6 / 9 SHEET 06 OF 11
Designated By: WRM Design Date: APR 2020	Checked By: GHR Date: APR 2020
Project Number: 20-1254-SB-SR-01-01-01 Reference File: 20-1254-H001.DGN	Department of the Army JACKSONVILLE DISTRICT, CORPS OF ENGINEERS JACKSONVILLE, FLORIDA



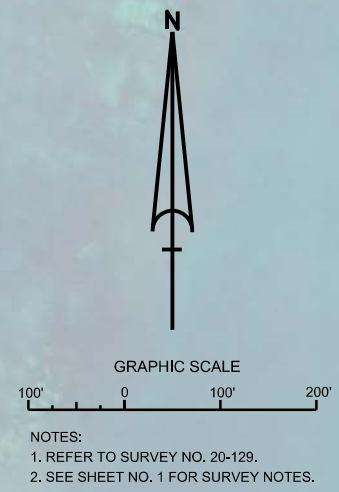
MATCHLINE SHEET NO. 06 STA. 20+00

MATCHLINE SHEET NO. 08 STA. 21+00



MAP LABEL	AIDS TO NAVIGATION	PLANE COORDINATES		LATITUDE	LONGITUDE
		X	Y		
INFO SIGN	SIGN (03/19)	947,198	636,222	26°04'52.60"	80°06'48.00"
INFO SIGN	SIGN (03/19)	947,409	637,965	26°05'09.85"	80°06'45.56"

PROPOSED LOCATION OF 6" BORE TO RELOCATE FPL SUBMERGED CABLE BY BROWARD COUNTY PUBLIC WORKS DEPT. DATED DECEMBER 20, 2013



US Army Corps of Engineers
Jacksonville District

SAFETY ON THIS JOB
DEPENDS ON YOU

DEPARTMENT OF THE ARMY
JACKSONVILLE DISTRICT, CORPS OF ENGINEERS
JACKSONVILLE, FLORIDA

Call by: GHR

Designed by: WRM

Drawn by: WRM

File No: W81255-00-00-000

Contract: APR 2020

PORT EVERGLADES HARBOR, FLORIDA

HYDROGRAPHIC EXAM SURVEY FY20

31-FOOT THRU 45-FOOT PROJECT

STA. 20+00 SOUTHPORT CUT-1 THRU STA. 21+00 SOUTHPORT CUT-2

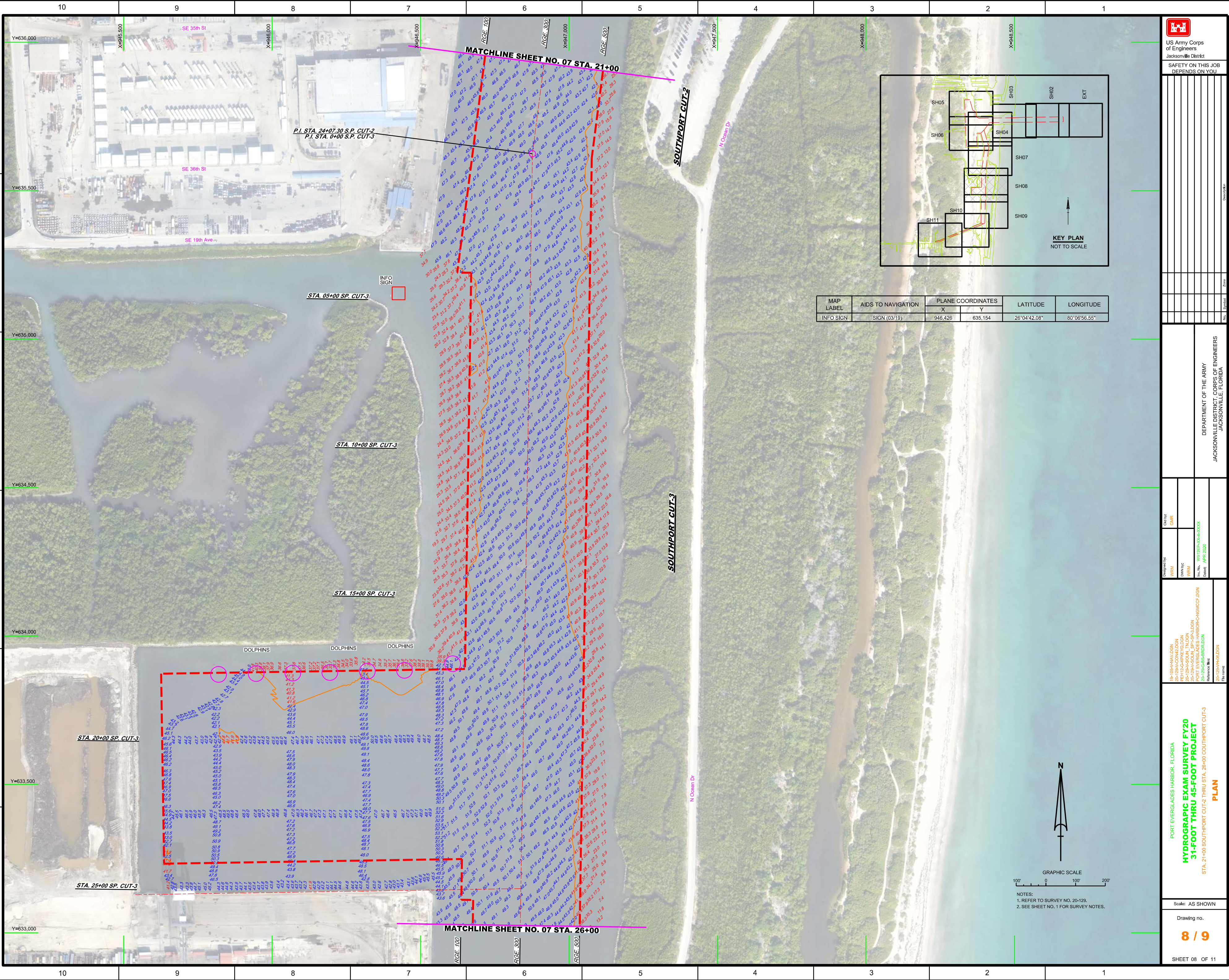
PLAN

Scale: AS SHOWN

Drawing no.

7 / 9

SHEET 07 OF 11



P.I. STA. 24+07.30 S.P. CUT-2
P.I. STA. 0+00 S.P. CUT-3

STA. 05+00 S.P. CUT-3

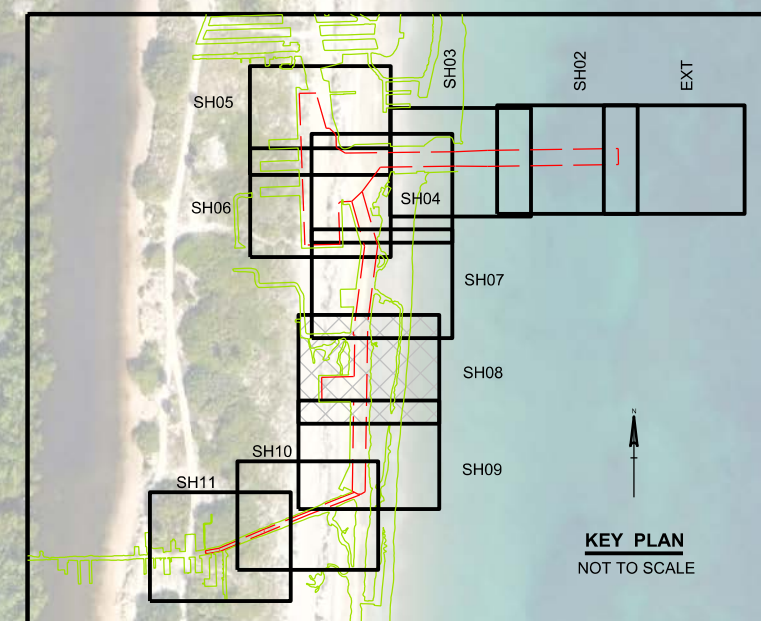
STA. 10+00 S.P. CUT-3

STA. 15+00 S.P. CUT-3

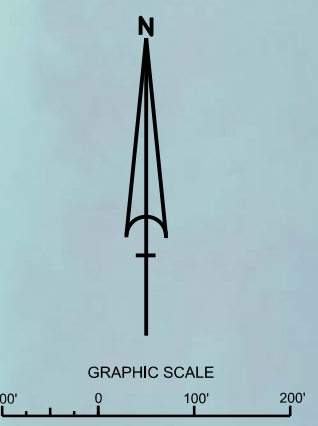
STA. 20+00 S.P. CUT-3

STA. 25+00 S.P. CUT-3


MATCHLINE SHEET NO. 07 STA. 26+00



MAP LABEL	AIDS TO NAVIGATION	PLANE COORDINATES		LATITUDE	LONGITUDE
		X	Y		
INFO SIGN	SIGN (03/19)	946,426	635,154	26°04'42.08"	80°06'56.55"



NOTES:
1. REFER TO SURVEY NO. 20-129.
2. SEE SHEET NO. 1 FOR SURVEY NOTES.



US Army Corps of Engineers
Jacksonville District

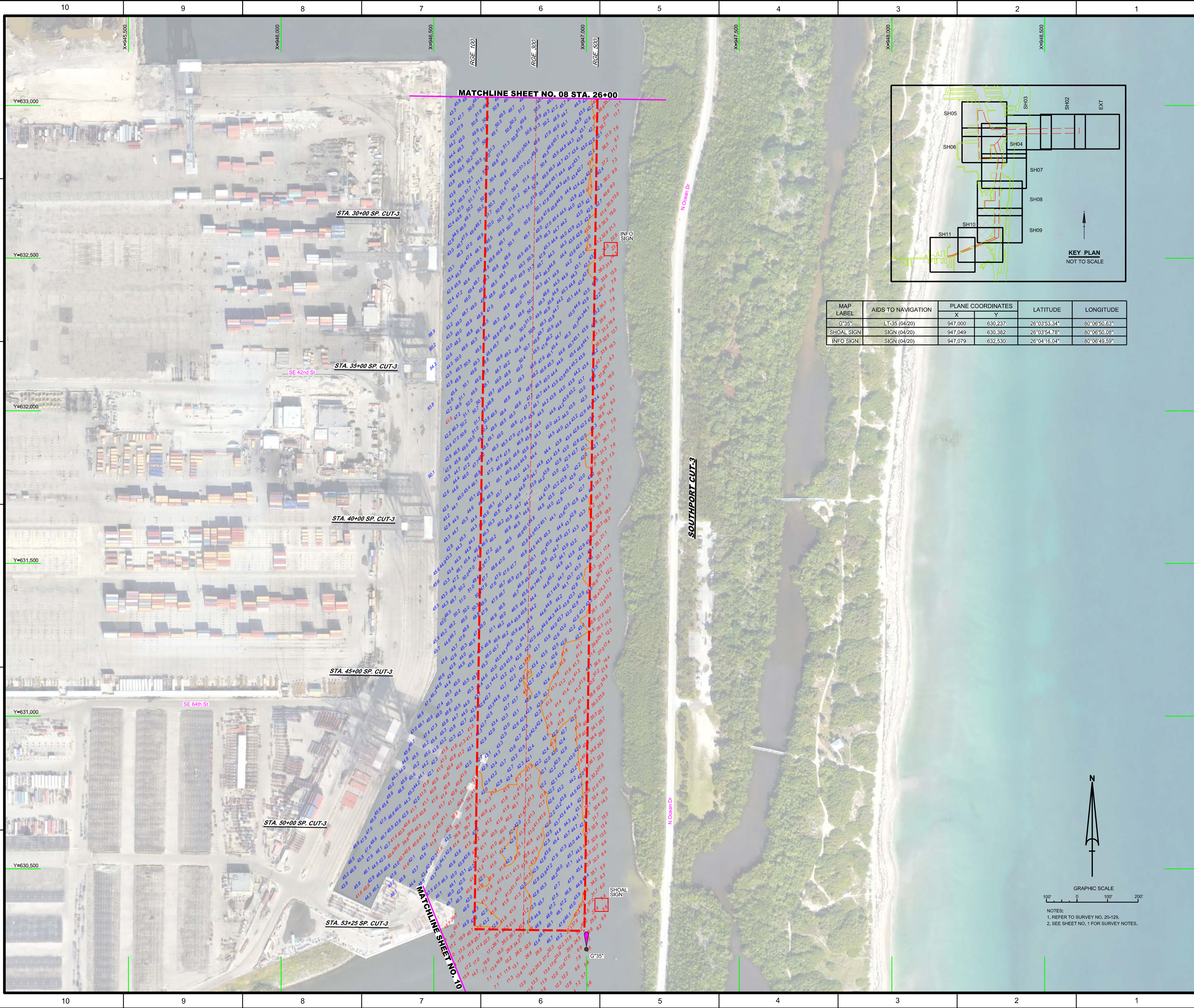
SAFETY ON THIS JOB
DEPENDS ON YOU

DEPARTMENT OF THE ARMY
JACKSONVILLE DISTRICT, CORPS OF ENGINEERS
JACKSONVILLE, FLORIDA

Scale: AS SHOWN

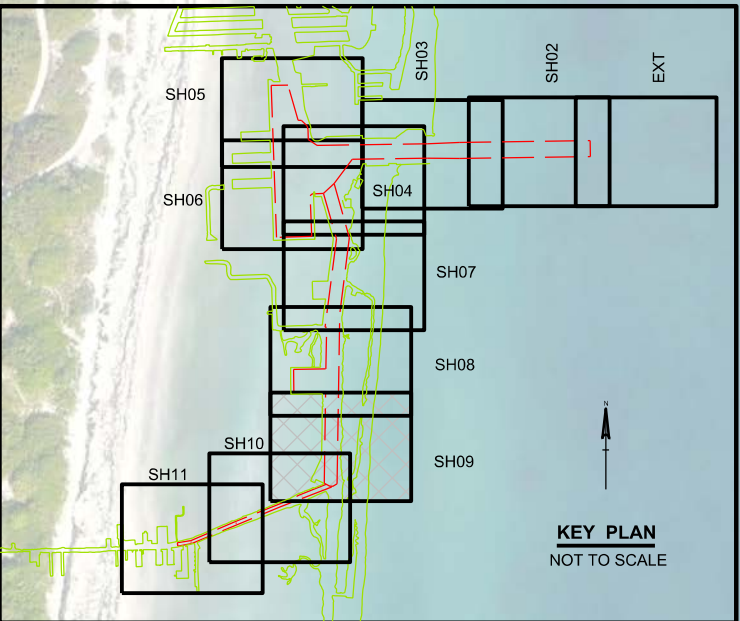
Drawing no.
8 / 9

SHEET 08 OF 11

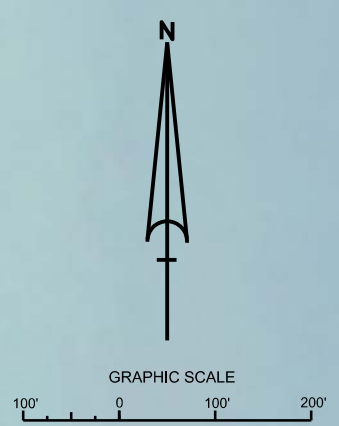


MATCHLINE SHEET NO. 08 STA. 26+00


MATCHLINE SHEET NO. 10



MAP LABEL	AIDS TO NAVIGATION	PLANE COORDINATES		LATITUDE	LONGITUDE
		X	Y		
G-35	LT-35 (04/20)	947,000	630,237	26°03'53.34"	80°06'50.63"
SHOAL SIGN	SIGN (04/20)	947,049	630,382	26°03'54.78"	80°06'50.08"
INFO SIGN	SIGN (04/20)	947,079	632,530	26°04'16.04"	80°06'49.59"



NOTES:
 1. REFER TO SURVEY NO. 20-128.
 2. SEE SHEET NO. 1 FOR SURVEY NOTES.



US Army Corps of Engineers
Jacksonville District

SAFETY ON THIS JOB
DEPENDS ON YOU

DEPARTMENT OF THE ARMY
JACKSONVILLE DISTRICT, CORPS OF ENGINEERS
JACKSONVILLE, FLORIDA

Drawn by: GHR

Checked by: WRM

Designed by: WRM

Reviewed by: WRM

Project: PORT EVERGLADES HARBOR CANAL PROJECT

Task: STA. 26+00 THRU STA. 53+66 SOUTHPORT CUT-3

Reference: 20-128-00-00-00-00

Scale: AS SHOWN

Drawing no. **9 / 9**

DATE: APR 2020

PORT EVERGLADES HARBOR, FLORIDA

HYDROGRAPHIC EXAM SURVEY FY20

31-FOOT THRU 45-FOOT PROJECT

STA. 26+00 THRU STA. 53+66 SOUTHPORT CUT-3

PLAN

SHEET 09 OF 11

